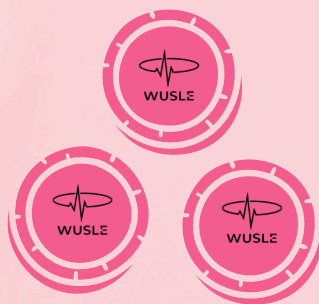
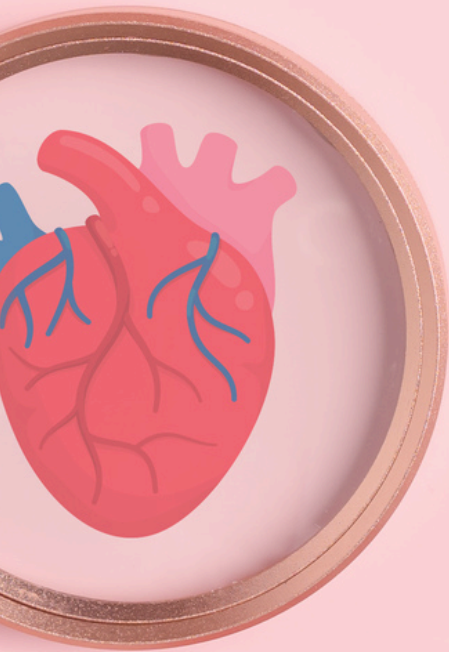


White Paper



WUSLE

**Transforming Health into Wealth Through
Blockchain Technology**



**Prepared by:
\$WuSle Technical Team**



Executive Summary

\$WuSle is transforming the way people engage with their health by merging wearable technology with blockchain innovation. In a world where motivation to stay active is a challenge and cryptocurrency mining is energy-intensive, \$WuSle offers a revolutionary solution—a smart bracelet that allows users to generate cryptocurrency simply by tracking their heart health. This innovative approach not only promotes well-being but also provides an eco-friendly alternative to traditional mining methods.

By leveraging real-time biometric data, \$WuSle introduces a unique Proof of Activity model, where users earn \$WuSle tokens based on their physical activity levels. This creates a financial incentive for users to lead healthier lives while participating in the growing digital economy. With an intuitive wearable device, a seamless mobile app, and secure blockchain integration, \$WuSle ensures that users can mine cryptocurrency effortlessly while maintaining full control over their earnings.

The global health-tech market is expanding rapidly, and the cryptocurrency industry continues to thrive. \$WuSle sits at the intersection of these booming sectors, tapping into a massive market of fitness enthusiasts, tech-savvy users, and blockchain investors. Through a combination of device sales, subscription-based premium features, transaction fees, and strategic partnerships, \$WuSle has built a sustainable and scalable business model that benefits both users and stakeholders.

With a structured roadmap in place, \$WuSle is poised for rapid expansion. By redefining the way people interact with health and finance, \$WuSle is not just a platform—it's a movement toward a future where staying healthy is more rewarding than ever. Now, every heartbeat has the power to generate wealth.

Vision

\$WUSLE envisions a world where health and finance are seamlessly connected, making wellness more rewarding than ever. We aim to become the leading platform at the intersection of health-tech and blockchain, driving innovation in biometric-based crypto mining while promoting sustainable, data-driven fitness solutions. By revolutionizing the way people engage with wearable technology and digital assets, \$WUSLE seeks to build a healthier, wealthier, and more connected global community.

Mission

\$WUSLE is dedicated to transforming the way people approach health and financial empowerment through blockchain technology.

Our mission is built on three core principles:

- 01 Empower Healthy Living:** Encourage individuals to lead an active lifestyle by providing financial incentives through biometric-based cryptocurrency mining.
- 02 Promote Eco-Friendly Crypto Mining:** Offer a sustainable alternative to traditional energy-intensive mining by utilizing heart rate data as a mining mechanism.
- 03 Build a Global Wellness Community:** Foster a decentralized and inclusive ecosystem where users are rewarded for prioritizing their health while engaging in a supportive, blockchain-driven network.

PROBLEM & SOLUTION



Key Points

The Problem

- **Lack of Motivation for Fitness:** Many people struggle to stay active due to lack of incentives.
- **Ineffective Fitness Apps:** Traditional fitness trackers provide data but fail to offer financial rewards.
- **Environmental Concerns in Crypto Mining:** Traditional cryptocurrency mining consumes high amounts of energy, harming the environment.
- **Market Gap:** No existing solution effectively combines fitness tracking, financial rewards, and sustainability.

The Solution

Earn Crypto by Staying Active: \$WUSLE uses a Proof of Activity model, allowing users to mine crypto through movement.

Wearable Tech Integration: A smart bracelet tracks heart rate and automatically rewards users with \$WUSLE tokens.

Eco-Friendly Crypto Mining: Eliminates the need for energy-intensive mining rigs, promoting sustainability.

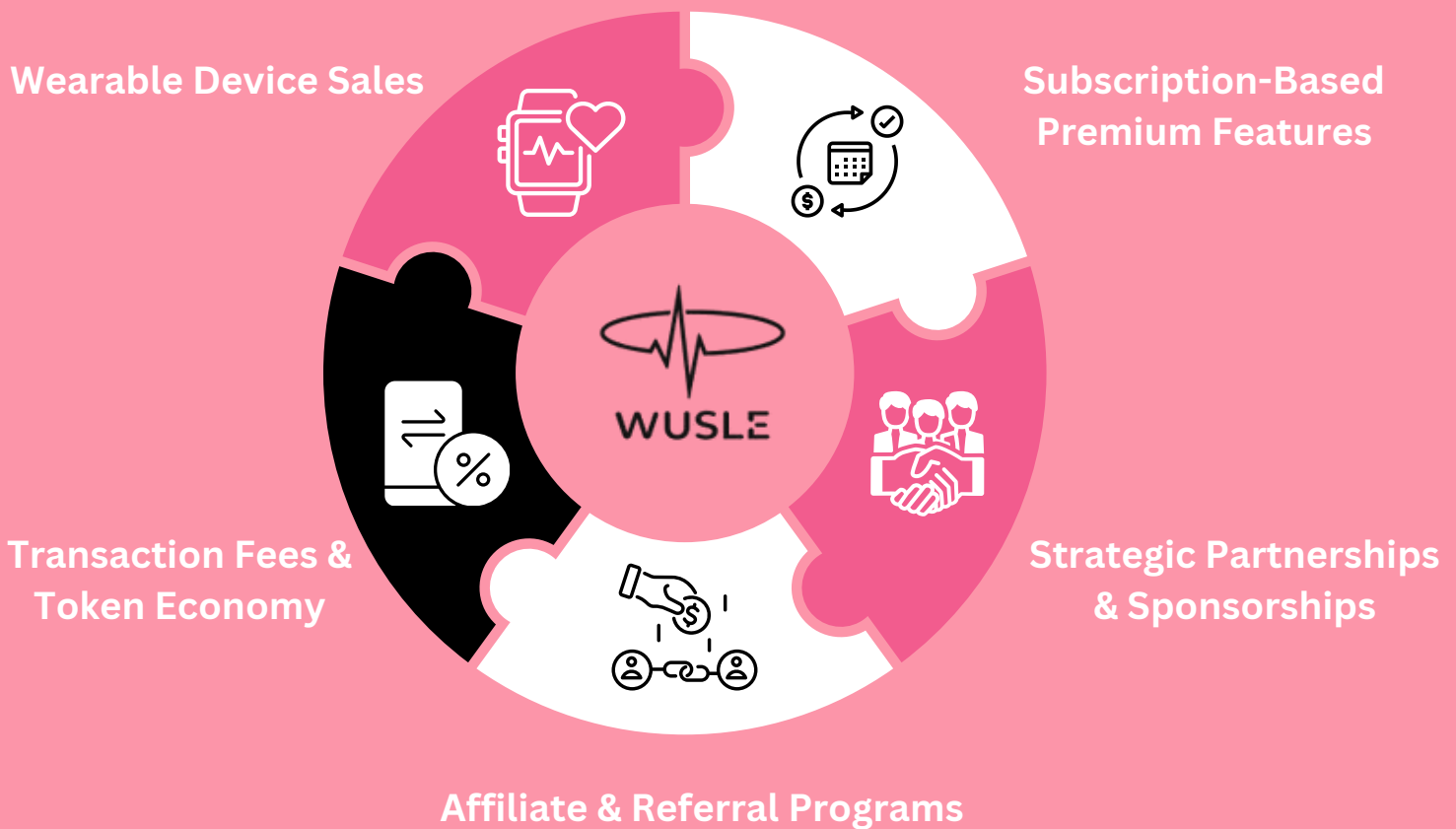
Gamified Experience: Users stay motivated through challenges, community rewards, and real financial incentives.

Blockchain Security & Transparency: Ensures secure transactions, decentralization, and fair rewards for all participants.



Business Model

\$WUSLE operates on a multi-faceted business model designed to generate sustainable revenue while providing value to users, investors, and partners. By leveraging wearable technology, blockchain incentives, and strategic partnerships, \$WUSLE ensures long-term scalability and adoption. The core components of the business model include:



Business Model

\$WUSLE's business model combines wearable device sales, premium subscriptions, and a token-based economy to create a sustainable revenue stream. Users can purchase smart bracelets to mine cryptocurrency and subscribe to advanced analytics and exclusive rewards. The platform generates income through transaction fees, staking rewards, and merchant partnerships, while strategic collaborations with fitness and health brands further expand its reach. Additionally, referral and affiliate programs drive community growth, making \$WUSLE a dynamic ecosystem where health and financial incentives align seamlessly.



Wearable Device Sales:

\$WUSLE generates revenue through the sale of its smart bracelets, which serve as the primary tool for tracking heart rate and mining cryptocurrency. These devices come with different pricing tiers, catering to both casual fitness users and high-performance athletes looking for advanced biometric insights.



Subscription-Based Premium Features:

While the basic tracking and mining features are free, users can subscribe to premium services that unlock advanced health analytics, personalized fitness recommendations, priority rewards, and exclusive access to community challenges.



Transaction Fees & Token Economy:

- In-App Transactions: Users pay a small fee for transferring, exchanging, or cashing out \$WUSLE tokens.
- Staking & Rewards: Users can stake \$WUSLE tokens to earn rewards or increase mining efficiency.
- Merchant Partnerships: Businesses and fitness brands can accept \$WUSLE tokens, boosting ecosystem growth and earning revenue from transaction fees.



Strategic Partnerships & Sponsorships:

\$WUSLE collaborates with fitness brands, wellness companies, and healthcare organizations to offer exclusive promotions, challenges, and incentives to users. These partnerships create additional revenue streams while expanding the platform's reach.



Affiliate & Referral Programs:

\$WUSLE offers users an opportunity to earn commissions through referrals. By inviting friends or promoting the platform, users receive a percentage of transactions or token earnings, boosting user engagement and retention.

“

Every heartbeat is a step toward a healthier future. With \$WUSLE, we turn movement into motivation, wellness into wealth, and innovation into opportunity. The future of health and finance is no longer separate—it beats as one.

”



TECHNOLOGY BEHIND \$WUSLE

\$WUSLE Transforms Fitness into Financial Freedom!"

\$WUSLE combines wearable technology, blockchain, and AI-driven analytics to reward users for staying active. With real-time tracking, secure smart contracts, and personalized insights, it transforms fitness into financial opportunity.

Hardware

The \$WUSLE bracelet is built with high-quality, water-resistant materials, ensuring durability and comfort for everyday use. It features advanced biometric sensors that provide accurate real-time heart rate monitoring and physical activity tracking. The device is powered by a compact microcontroller, optimizing data processing efficiency while maintaining long battery life.

Software

\$WUSLE offers a user-friendly mobile application, available on iOS and Android, that seamlessly syncs with the wearable device. Users can track their heart rate data, activity levels, and cryptocurrency balance in real-time. The app is designed with gamification elements, such as badges, challenges, and rewards, to boost engagement and motivation. It also includes personalized fitness insights based on AI-driven analytics.

Blockchain Technology

The \$WUSLE ecosystem is built on blockchain technology, ensuring security, transparency, and decentralization. Every transaction and reward distribution is recorded immutably, guaranteeing a fair and tamper-proof system. Smart contracts automate the minting and distribution of \$WUSLE tokens, rewarding users instantly based on their verified physical activity.

Data Analytics

\$WUSLE employs advanced data analytics and AI-powered algorithms to offer users deep insights into their health trends. By continuously analyzing heart rate patterns, activity levels, and progress, the platform provides personalized fitness recommendations to enhance overall well-being. This data-driven approach empowers users to make informed decisions about their health while maximizing their cryptocurrency earnings.



Advantages

\$WUSLE seamlessly integrates fitness, blockchain, and financial rewards, making an active lifestyle more engaging and rewarding. By utilizing biometric data for cryptocurrency mining, the platform offers an eco-friendly, user-friendly, and financially empowering solution. With a seamless experience, real-time tracking, and community engagement, \$WUSLE encourages users to stay active while earning passive income in a secure and transparent blockchain ecosystem.

\$WUSLE transforms exercise into financial gain, providing users with crypto rewards for their physical activity. This incentive-driven model helps users maintain a consistent fitness routine while building digital wealth.

Eco-Friendly Cryptocurrency Mining

Unlike traditional mining, which requires high energy consumption, \$WUSLE uses biometric tracking to generate tokens. This Proof of Activity model eliminates the carbon footprint, making it a sustainable alternative.

Interactive & Motivating Community

Through leaderboards, challenges, and social features, users can compete, connect, and celebrate their achievements. The community-driven ecosystem keeps participants engaged and inspired.

Secure & Transparent Blockchain Integration

Built on decentralized blockchain technology, \$WUSLE ensures secure transactions, transparent rewards, and fraud prevention. Users have full control over their earnings in a safe and reliable ecosystem.

ROADMAP

Events, Listings & Community Engagement (May 2025)

- **Launching V2:** Official cinematic trailer release in May, 2025, showcasing \$WUSLE's future.
- **Community Engagement:** Launching wusle. social, a platform for community-driven growth, with a major contest offering big rewards.
- **Expanding the \$WUSLE Story:** Debut of a 2D animated short series, introducing \$WUSLE's vision and impact.
- **DEX Listings Launch:** Listings on Raydium, DEXTools, CoinMarketCap, and CoinGecko.

Entering the Global Stage (Q2 2025)

- **Tier 1 CEX Listing #1:** First major exchange listing for global exposure and credibility.
- **Tier 1 CEX Listing #2:** Second high-profile exchange listing, expanding investor reach.
- **Community Contest #2:** Rewarding top contributors and most active users with exclusive \$WUSLE incentives.
- **Marketing Expansion:** Large-scale digital campaigns, influencer collaborations, and strategic partnerships to drive global awareness.

Real-World Use Cases & Blockchain Growth (Q3 2025)

- **Launching the \$WUSLE Blockchain:** Custom blockchain launch for enhanced scalability, security, and efficiency.
- **Expanding the Ecosystem:** Partnerships with fitness brands, wellness platforms, and blockchain projects.
- **Binance Listing:** Application for Binance listing, targeting one of the largest exchanges worldwide.


Establishing & Strengthening Brand Presence (Q4 2025)

- **\$WUSLE Mobile App & Game:** Launching an interactive fitness app and blockchain-integrated game with rewards for activity.
- **Exclusive Merchandise:** Introducing fitness gear, wearables, and collectibles to boost brand loyalty.
- **Real-World Partnerships:** Collaborating with global fitness chains, wellness influencers, and health organizations for wider adoption.

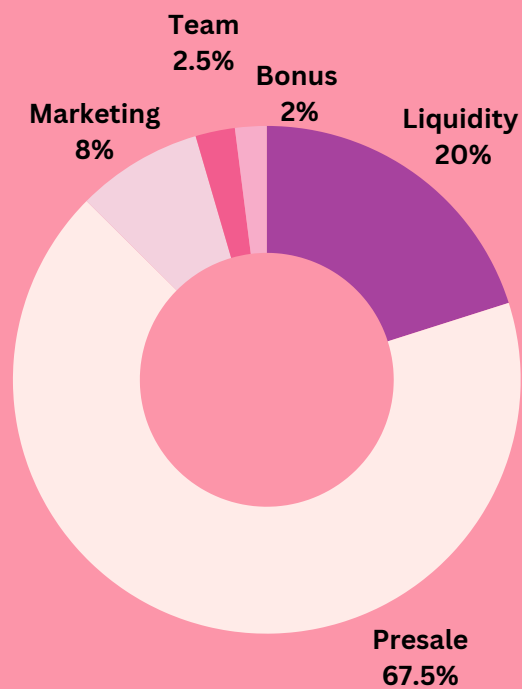
2026: Expansion & Future Innovations

- **Airdrops for Holders:** Exclusive rewards for \$WUSLE token holders to increase engagement.
- **Further Expansion:** Continuous growth through new partnerships, feature integrations, and blockchain advancements.

Token Details

NAME wusle
SYMBOL 
Blockchain Solana
Total Supply 30,000,000

Token Distribution



THANK YOU



WUSLE